



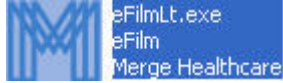
eFilm™ Lite™ - Quick Reference

Disc Instructions:

After inserting the CD into the CD drive, the eFilmLite application should auto-start. This will take several seconds.


If auto-start is not enabled on the workstation, launch eFilmLite application manually:

1. Double-click (left mouse button) on the CD drive,
2. Double-click (left mouse button) on the eFilmLite Folder & left-click on eFlimLt.exe



3. This should launch the application. If it does not launch, contact Merge Healthcare Technical Support

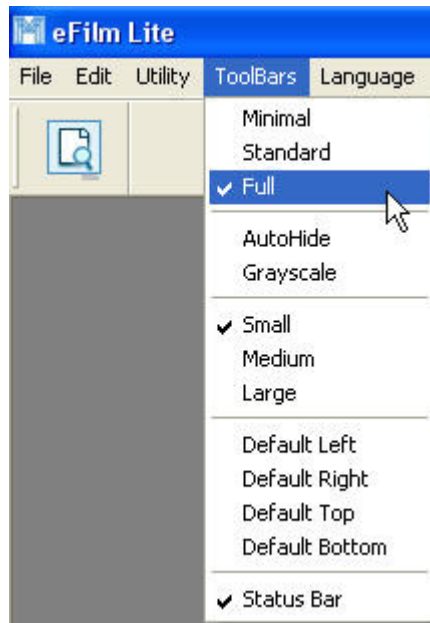
Getting Started:

1. Left-click on the exam you wish to view and click on the View button.
2. Move the mouse up and down over an image while holding down the left mouse button to scroll through the images in the study.
3. Move the mouse left to right over an image while holding down the right mouse button to adjust contrast.
4. Move the mouse up and down over an image while holding down the right mouse button to adjust brightness.
5. To view another study, left mouse click on the Search button  on the top left-hand corner.

Using Tools:

To see all the tools that can be used with eFilmLite:

1. Left mouse click on the Toolbars menu and select Full




Making linear measurements



eFilm Lite allows you to make straight-line measurements on displayed images. On ES, OT, RF, SC, US, and XA images, measurements are displayed in pixels, until calibration is performed. In all other modalities, they are displayed in centimeters.

Warning: Measurements performed on CR, DX, and MG images may be inaccurate unless you calibrate the measurement tools (use the Help menu for further instructions).

To make a linear measurement:

1. Choose one of the following options:
 - On the **Tools** menu, click **Measurement Tool - Line**
 - Click 
2. Position the cursor at the starting location, and right-click and drag the cursor to the ending location.
3. Release the mouse button. A line with a distance measurement appears in blue.



You can stretch the line or move it to a new location. You can also move the measurement caption to a new location.

To stretch the line:

- Left-click either end of the line and drag it to a new location.

To move the line:

- Left-click anywhere on the line except at the ends and drag it to a new location.

To move the measurement caption:


- Left-click anywhere on the measurement caption and drag it to a new location.

Note: A line that appears in blue indicates that the line is selected and can be manipulated. An unselected line appears in orange.

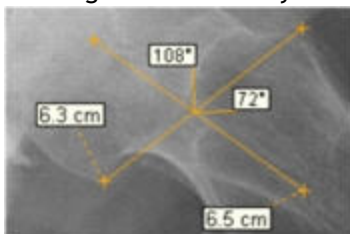
Displaying angle measurements


Angle measurements allow you to display the angles between intersecting lines.

To display the angle measurements:

1. Draw intersecting lines on the image.
2. Choose one of the following options:
 - On the **Tools** menu, click **Measurement Tool - Show Angles**
 - Click 

The angles between any intersecting lines appear in orange.



Note: To toggle the display of the angle measurements off, click .

Note: In cases where lung bases are not horizontally aligned, the CTR calculation uses a horizontal diameter of the thorax rather than the diagonal measurement displayed.

Warning: Due to limitations in data acquisition, the calculations are approximate.